

## MS-350 ASSEMBLY INSTRUCTIONS

The attached pictures show examples of how the MS-350 drone mounts are assembled. This drone mount is a carbon fiber plate that can easily be customized to be attached under many drone frames.

MS-350 Plate	MS-350 Attached to Plate	Drone Plat MS-350 Drawing
		<p>*See attached image, pg. 3*</p>

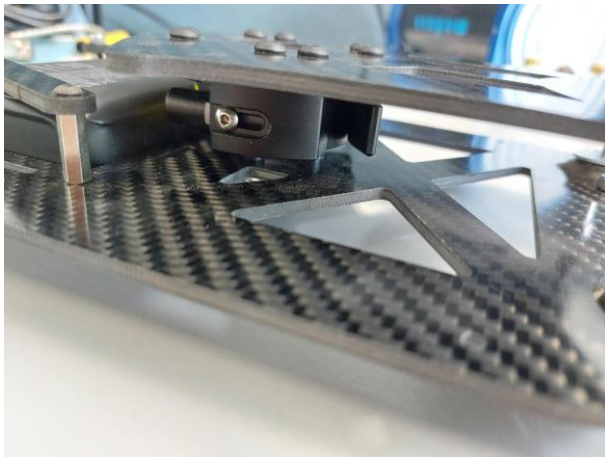
### Assembly Instructions



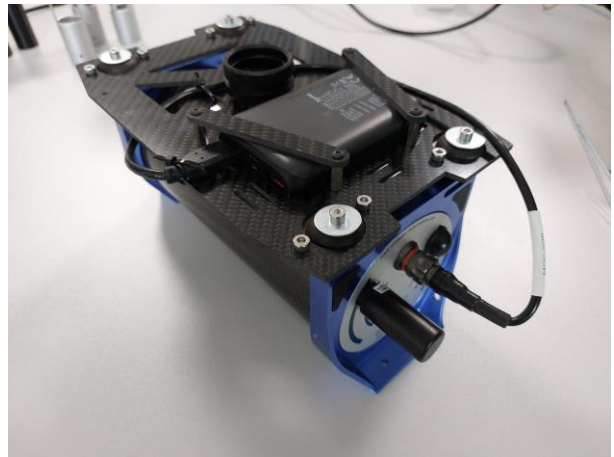
## Quick Release

It is possible to add a quick-release system to this plate. This includes a second part that can be attached to the bottom of a drone. These two separate parts can be easily (re-)attached.

The pictures to the right show how the upper part of the mounting is attached to the bottom of a DJI M300 drone.



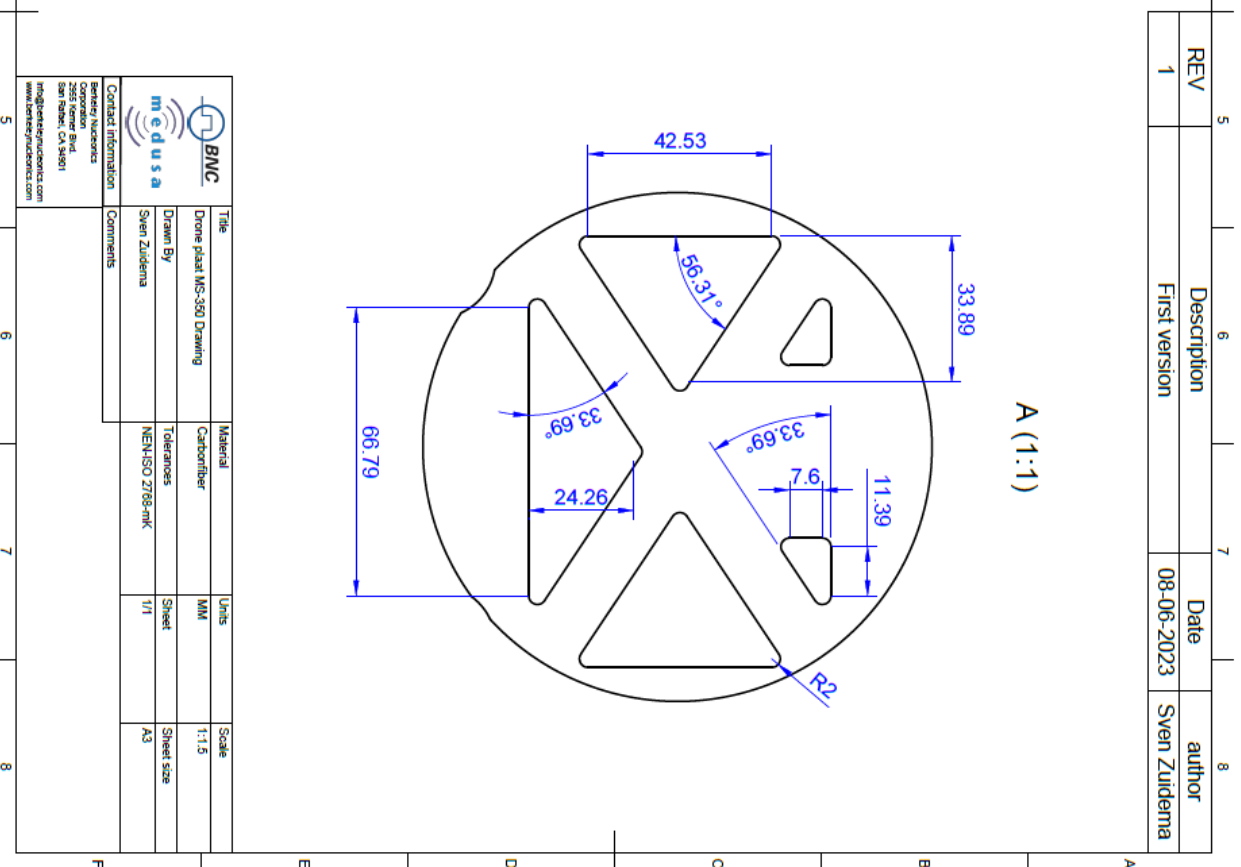
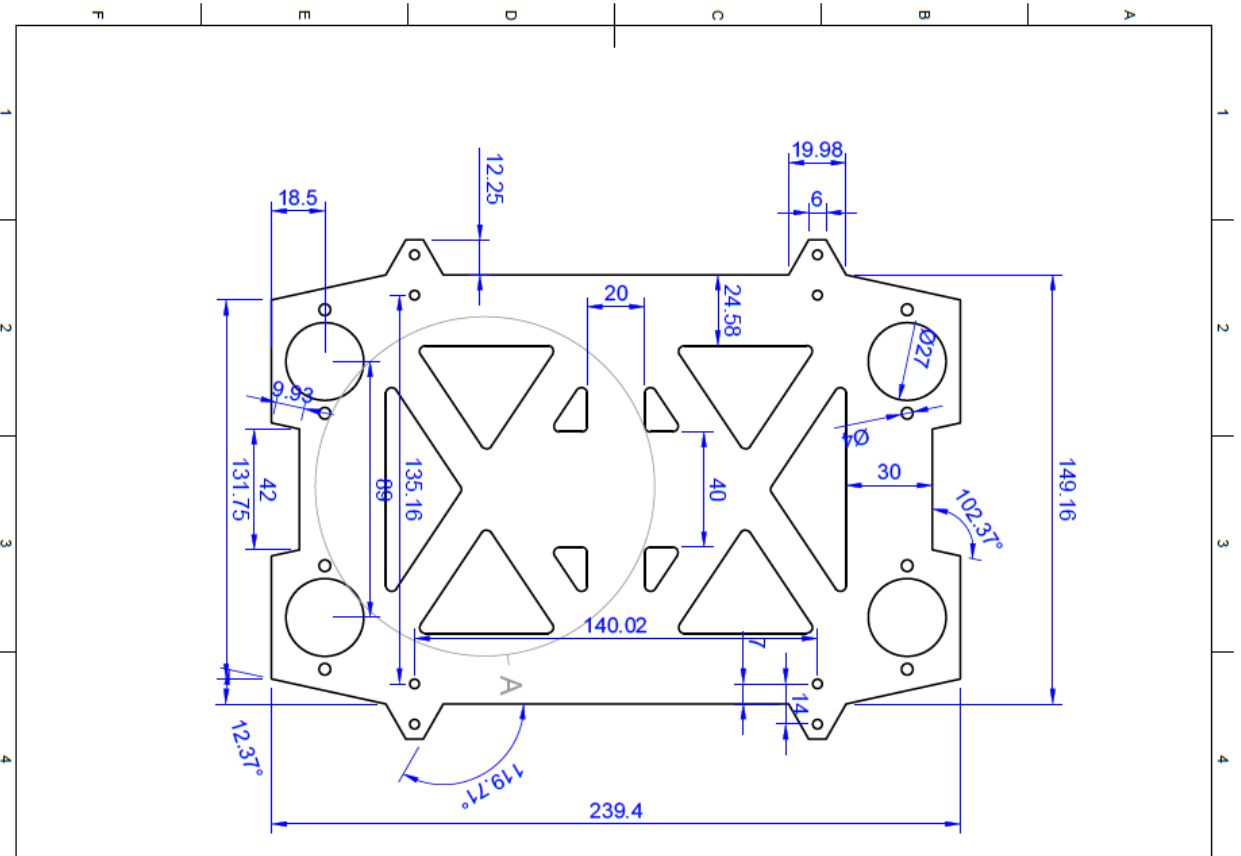
The two parts of the mounting plate attached by the quick-release system



Mounting plate with an outfitter area for a power bank on a MS350 detector

The picture below shows how the detector is mounted under a DJI-M600 frame or fitted with a quick-release interface.





REV	Description	Date	author
1	First version	08-06-2023	Sven Zuidema

 	Title	Material	Units	Scale
	Drone plat MS-350 Drawing	Carbonfiber	MM	1:1.5
Contact Information Berkeley Nucleonics 2555 Kerner Blvd. San Pablo, CA 94601 info@berkeley-nucleonics.com www.berkeley-nucleonics.com		Drawn By	Tolerances	Sheet size
		Sven Zuidema	NEN-ISO 2768-mK	A3
		Comments	1/1	