



Model 745-OEM

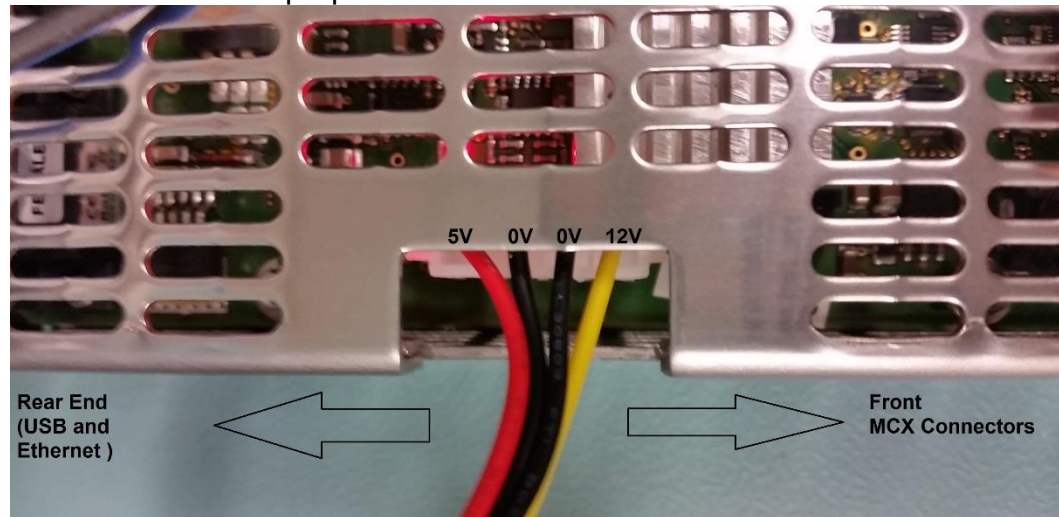
Delay Generator
Quick Start Guide v2



- I. Equipments and Material:
 - a. Model 745-OEM
 - b. USB Cable Type A to Mini B
 - c. MCX patch cables (not included)
 - d. Power Supply 5Vdc and 12Vdc (not included)
 - e. CAT5 (not included)
 - f. Terminal Software (HyperTerminal or similar) or Model 745 GUI

- II. Hardware Set Up:
 - a. Connect the DC power supply but do not power it up yet.

*** Please note the proper orientation below.



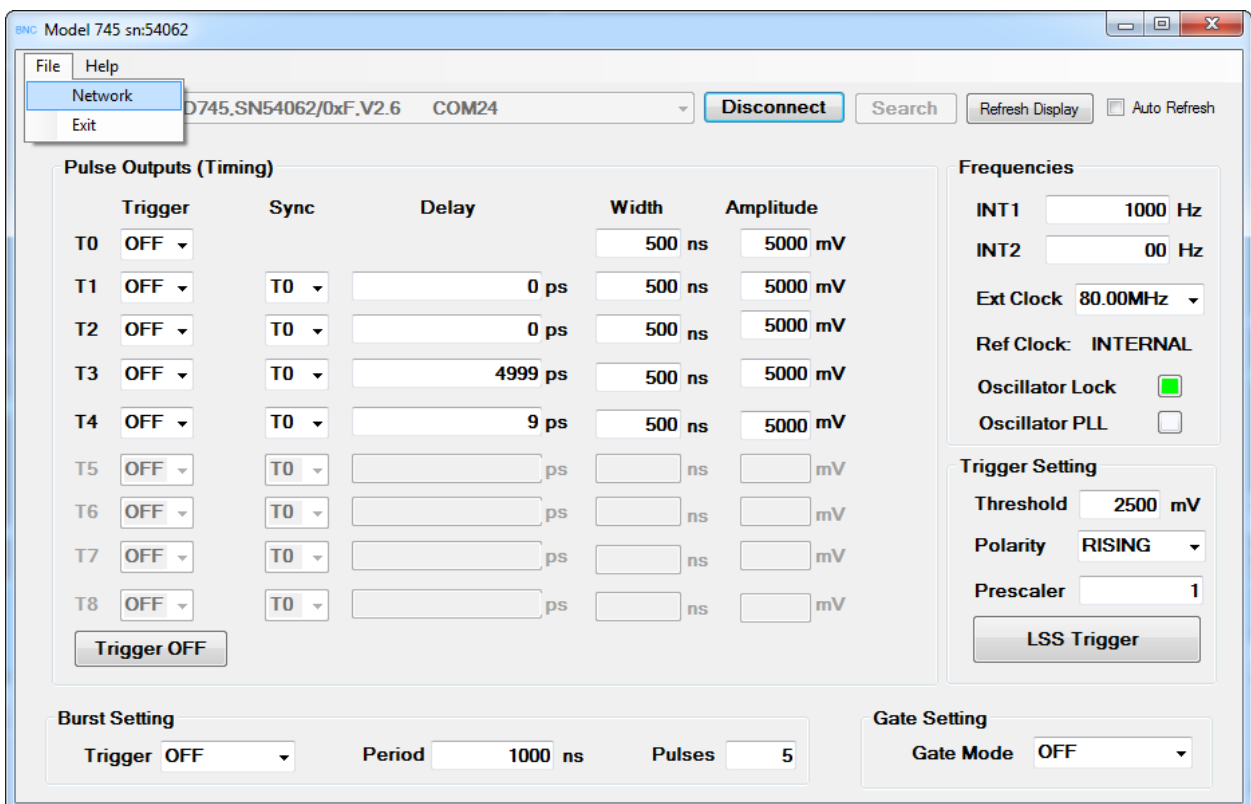
- b. Connect all MCX connectors.
 - c. Connect the USB and ethernet cable on the rear side of the 745-OEM
 - d. Connect the USB to your PC.
 - e. Connect ethernet cable direct to your PC or to a network switch / router.
 - f. Power up the device
- III. Software Setup (Terminal Software)
 - a. Open windows device manager and check the newly assigned COM port number. (i.e. COM10)
 - b. Launch HyperTerminal or similar software
 - c. Set Baud = 38400, 8 Bits, 1 Stop Bit, No Parity, HW control = NONE
 - d. Connect to 745-OEM using COM port listed on III.a above for the 745-OEM
 - e. Issue command ***IDN?** to confirm connection. Device will respond with its model, serial and FW version number.
 - f. Once serial communication is set, send the following command and take note of the values.
 - i. **IP?**
 - ii. **GW?**
 - iii. **NM?**

*** The above command queries IP address, Gateway and Netmask. If you need to change any of the above settings then issue any or all the following:

- iv. **IP <address>** i.e. IP 192.168.1.20 to set the IP to 192.168.1.20
- v. **GW <address>** i.e. GW 192.168.1.1 to set the gateway to 192.168.1.1
- vi. **NM <address>** i.e. NM 255.255.255.0 to set the netmask to 255.255.255.0
- g. Cycle the power of the Model 745-OEM

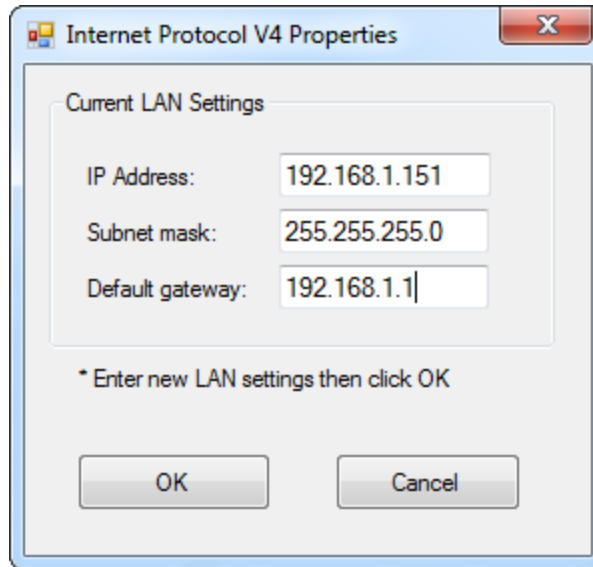
NOTE: LAN settings can also be changed using telnet on port 4000 if IP address is known. i.e. A:> **telnet 192.168.1.21 4000**

- IV. Using Model 745 Graphical User Interface
- a. Connect Model 745-OEM to your PC using the USB cable
 - b. Power Up the device
 - c. Install Model 745 GUI to your PC and launch it.
 - d. Select a device from the drop down list or click Search if no devices are displayed.



- e. Click Connect to connect to that specified device.
- f. Once connected, the current settings will be displayed.

- g. To change the IP address, click File => Network



- h. Enter the new IP address then click OK
- i. Click disconnect then power cycle the device to implement the changes.
- j. Model 745 can be controlled using either Model 745 GUI or the web interface
- V. Controlling 745-OEM.
- Launch web browser (Chrome, Firefox, or similar)
 - Type in the IP address listed on procedure III.f or IV.h
 - The default username is **BNC** and default password is **bnc**