

# RF / Microwave Signal Generators

3 GHz, 6 GHz, 12 GHz, 20 GHz & 26.5 GHz available

1U Rackmount, OEM Options



## All Benchtop Model Features

- LAN/USB/GPIB remote control with SCPI 1999 command set
- Complimentary powerful & easy to use GUI
- Compact, robust, lightweight, portable & rugged design
- Sealed, fan-less, enclosure (low power consumption)
- Internal rechargeable battery options
- Field carrying case available
- Single and double rackmounts available

### Model 845

100 KHz to 26+ GHz

- -90 to +13dBm power output (PE Model)
  - -90 to +23 dBm Power Output (HP Model)
  - Down to 30µs Frequency Switching Time
  - Very Low SSB Noise
  - -108 dBc/Hz @ 10 GHz Carrier (20 kHz offset)
  - Powerful trigger and sweeping modes
  - Comprehensive AM, low-distortion, wideband DCFM, & high speed pulse modulation
- Starts at \$13,167.00 USD**

### Model 835-3 / 835-6

9 KHz to 3.4 GHz / 9 KHz to 6 GHz

- < 200 µs Frequency Switching Time
  - Excellent SSB Noise
  - -120 dBc/Hz @ 3 GHz Carrier (20 kHz offset)
  - Comprehensive AM, low-distortion, wideband DCFM, & high speed pulse modulation
  - Powerful trigger and sweeping modes
- Starts at \$5,850.00 USD**

### Model 845-M

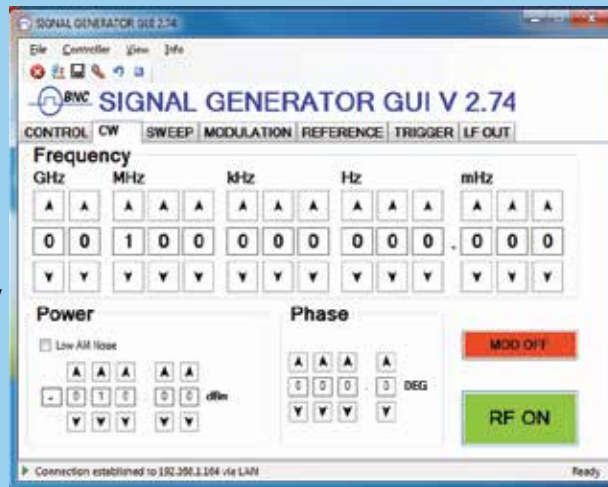
0.01 to 20 GHz

- < 100 µs Frequency Switching Time
  - Low Phase Noise
  - Ultra-Compact
  - Full GUI Control
  - FM, Chirps, PULSE
  - Internal OCXO reference
  - Single 6V supply
- Starts at \$9,000 USD**

### Options - 12, 20, 26.5 GHz

(Model 845 Series)

- LO - No Modulation (CW Only) 20 & 26.5 GHz only
- HP - High Power (output power enhanced)
- FS - Ultra Fast Switching
- LN - Ultra Low Phase Noise
- R - 1U rackmount enclosure
- PE - Power Range ext. to -90 dBm
- G - GPIB Interface
- RB - Internal rechargeable battery



### Model 835-M

9 KHz to 3 GHz

- -65 to +10 dBm in 0.1 dB resolution
  - Fast Pulse Modulation
  - Powerful trigger and sweep modes
  - Full GUI Control
- Starts at \$4,000.00 USD**



Berkeley Nucleonics Corporation  
Precision Instrumentation Since 1963...

Berkeley Nucleonics Corporation  
2955 Kerner Blvd. San Rafael, CA 94901 USA  
PH: (415)453-9955 FX:(415)453-9956

[www.berkeleynucleonics.com](http://www.berkeleynucleonics.com) - [rfsales@berkeleynucleonics.com](mailto:rfsales@berkeleynucleonics.com)

# RF / Microwave Signal Generators

3 GHz, 6 GHz, 12 GHz, 20 GHz & 26.5 GHz available

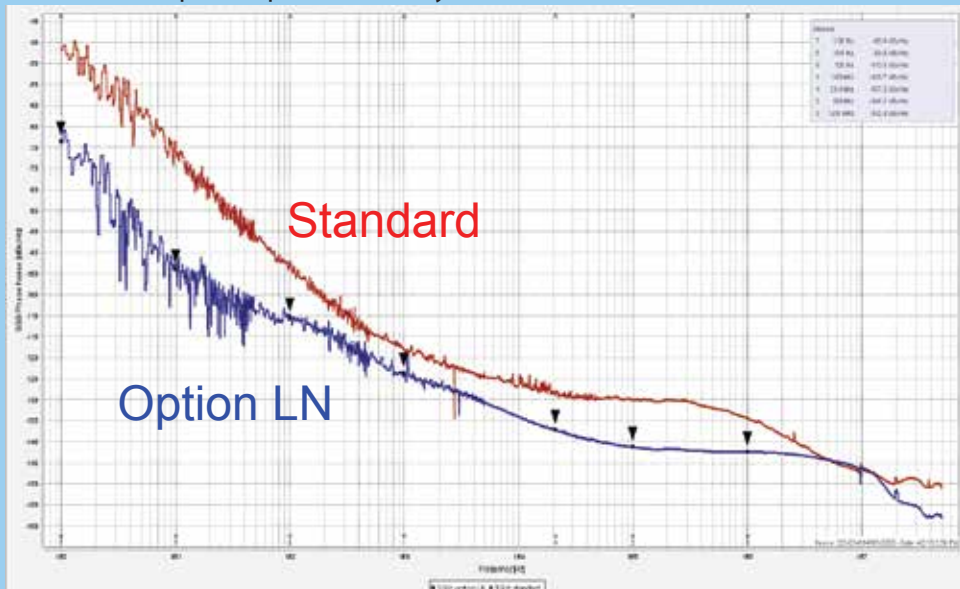
	Model 845-20	Agilent MXG N5183A	Agilent E8257D PSG w options	R&S SMB B120L w options
Freq. Range Resolution	100 kHz-20.5 GHz 0.001 Hz	250 kHz -20 GHz 0.01 Hz	250 kHz -20 GHz 0.01 Hz	100 kHz -20 GHz 0.001 Hz
Switching Speed Option FS	0.2 ms 0.03 ms	5 ms (1.15 ms option UNZ)	9 ms	3 ms
Power range Option PE3 Option HP Resolution	-30 to +20 dBm -190 to +13 dBm -20 to +26 dBm 0.01 dB	-90 to +7 dBm 0.01 dB	-135 to +15 dBm 0.01 dB	-20 to +22 dBm 0.01 dB
Phase Noise 10G OCXO Option LN	-108 dBc/Hz < 0.1 ppm -117 dBc/Hz 0.01 ppm	-98 dBc/Hz < 1 ppm	-115 dBc/Hz < 0.05 ppm	-108 dBc/Hz < 0.1 ppm
Modulations	AM/FM/PM/Pulse Trains/Chirps	optional	optional	optional
Extras	Portable Internal battery	-	-	-
Weight, size Power consump.	2.5 kg < 15 W	12.8 kgs 250 W	22 kgs 250 W	6.9 kgs >90 W
List Price	\$17,000.00 USD	\$42,000.00 USD	\$68,000.00 USD	\$51,000.00 USD

## Key Strengths

- Low phase noise / spurious / harmonic suppression
- Fast switching speed
- High RF output power
- Powerful modulation (narrow pulse, fast chirps)
- Excellent phase coherence
- Internal batter / low power consumption/ quiet operation

## Phase Noise 845-20 (1 GHz)

OPTION LN improves phase noise by 5-30 dB



Berkeley Nucleonics Corporation  
Precision Instrumentation Since 1963...

Berkeley Nucleonics Corporation  
2955 Kerner Blvd. San Rafael, CA 94901 USA  
PH: (415)453-9955 FX:(415)453-9956  
www.berkeleynucleonics.com - rfsales@berkeleynucleonics.com